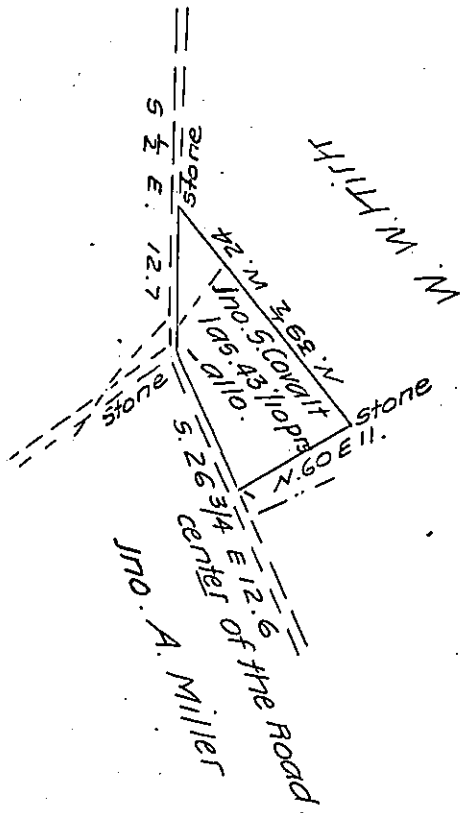


Jas Gregory.



Draft of a tract of land Containing 1 acre and 43 1/10 perches
 & allowances of .6 per cent for roads &c. Situated in Warfordsberg
 in Bethel Township in the County of Fulton. Surveyed on 12th of Septem-
 ber A. D. 1870 in pursuance of a Warrant granted to Jno. S. Covalt for
 one acre of improved land including a dwelling house on warrant
 bearing date 30th day of August A. D. 1870.

Wm. P. Gordon S V

To Jacob M. Campbell
 Surveyor General.

Carefully examined and approved by me this the 19 day of
 September A. D. 1870.

I. N. Culp, C.S.

IN TESTIMONY that the above is a copy of the original remaining on file in
 the Department of Internal Affairs of Pennsylvania, made
 conformably to an Act of Assembly approved the 16th day of
 February, 1833, I have hereunto set my Hand and caused
 the Seal of said Department to be affixed at Harrisburg,
 this twenty-eighth day of October 1907

Henry Howard
 Secretary of Internal Affairs.